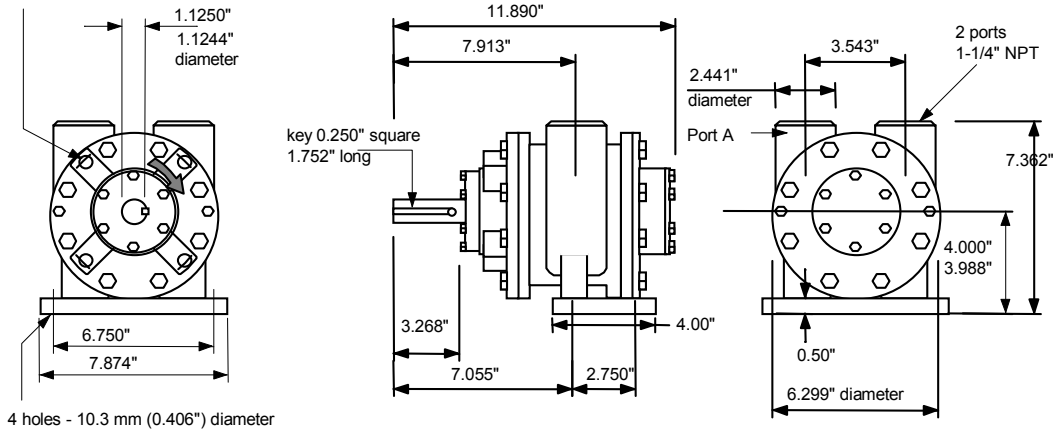


VA10J&X Vane Air Motor

VA10J Vane Air Motor

4 holes - 7/16" - 14-UNC
x 16 mm (0.63") deep
Equispaced on 98.370 mm P.C.D.



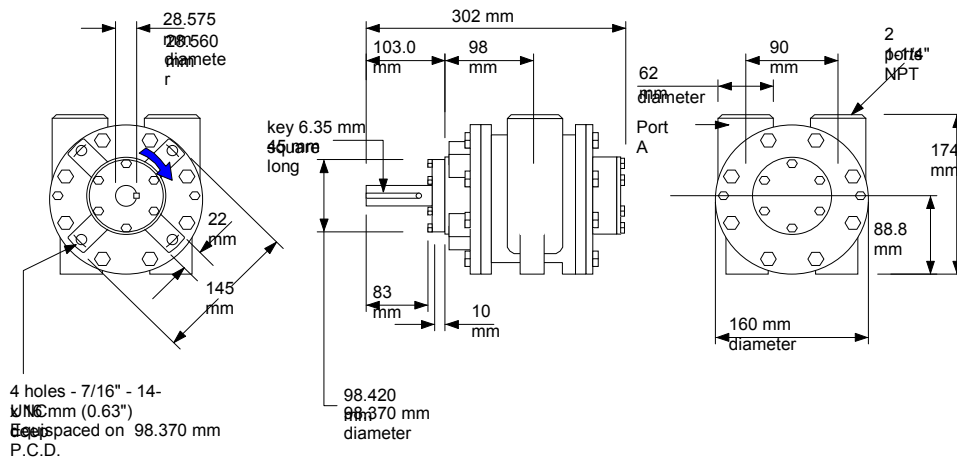
Attitude: The motor can be operated in all positions.
Maximum temperature -20°C to +80°C (-4°F to +176°F).
Muffler supplied with motor.

Max. Overhung Force on shaft 1750 N (400 lbf.).
Axial loads should be kept to a minimum.
Mass 22.00 kg (48.49 lb.).

**Note: With air inlet at port 'A',
rotation is clockwise looking on shaft.
For opposite rotation reverse ports.**

VA10X Vane Air Motor

Face mounting configuration



Attitude: The motor can be operated in all positions
Maximum temperature -20°C to +80°C (-4°F to +176°F)
Muffler supplied with motor

Max. Overhung Force on shaft 1750 N (400 lbf.)
Axial loads should be kept to a minimum
Mass 21.00 kg (46.28 lb.)

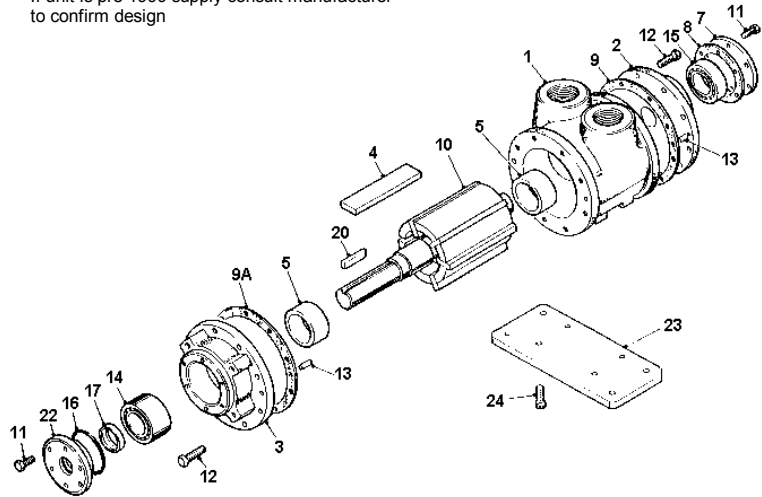
**Note: With air inlet at port 'A', shaft
rotation is clockwise looking on shaft.
For opposite rotation reverse ports.
Motor is reversible**

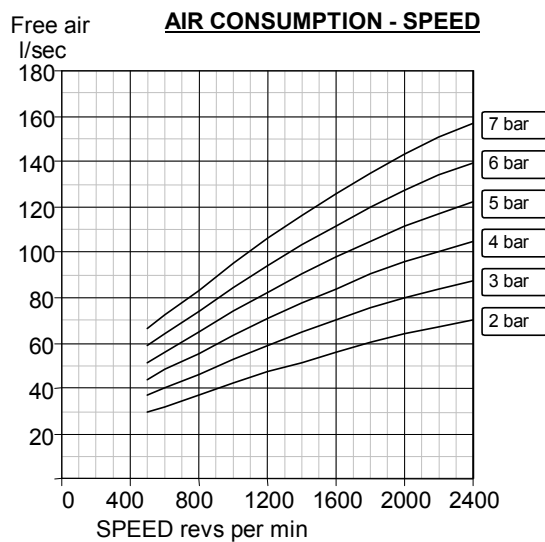
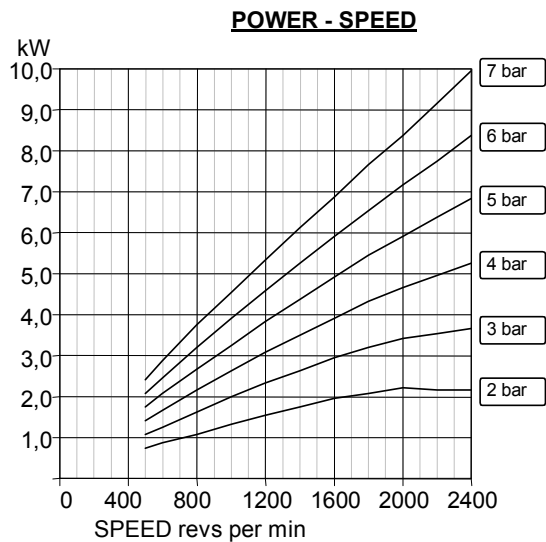
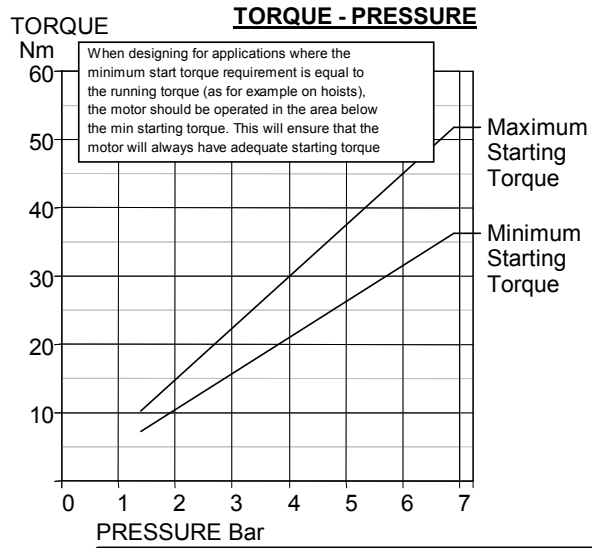
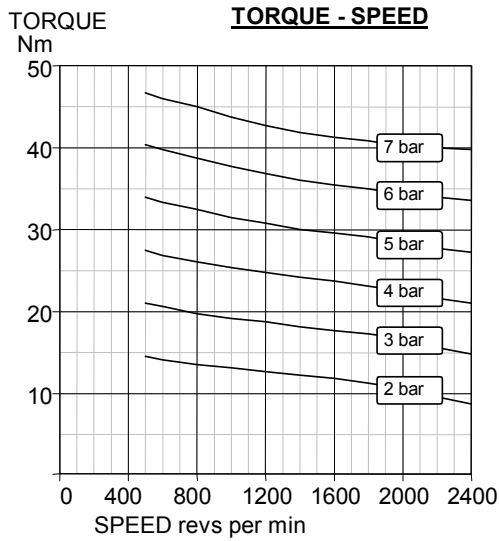
VA10J&X Vane Air Motor

Exploded view with spare parts list

Item	Part No.	Description	Qty	Kit No.
01	790-001	Body NPT	1	
02	790-002	End Plate	1	
03	790-003	Front Plate	1	
04	-	Blades	6	799-910
05	790-006	Ejection Ring	2	
07	790-008	Cover Plate	1	
08	-	Gasket	1	799-910
09	-	Gasket	2	799-910
09A-1	-	Gasket	2	799-910
09A-2	-	Gasket	2	799-910
09A-3	-	Gasket	2	799-910
10	790-911	Rotor & Shaft Assy	1	
11	802-007	Screw	12	
12	802-033	Screw	16	
13	806-018	Dowel	4	
14	807-037	Bearing	1	
15	807-019	Bearing	1	
16	-	O Ring	1	799-910
17	-	Oil Seal	1	799-910
20	811-024	Key	1	
21	803-019	Washer	16	
22	790-007	Seal Housing	1	
23	790-015	Base Plate	1	
24	809-008	Capscrew	4	
	799-910	V10 Seal Kit		
	820-027	Silencer 1-1/4" BSP	1	

If unit is pre 1990 supply consult manufacturer to confirm design





Muffler supplied with motor.
Motor is reversible.

Attitude: The motor can be operated in all positions.
Maximum temperature -20°C to +80°C (-4°F to +176°F).

Max. Overhung Force on motor shaft 1750 N (400 lbf.).
Axial loads should be kept to a minimum.

AIRLINE FILTRATION AND LUBRICATION

Use 64 micron filtration or better. Choose a lubricator suitable for the flow required. Prior to initial start-up, inject oil into the inlet port.
Lubricator drop rate 8-10 drops/minute continuous operation.
Lubricator drop rate 14-16 drops/minute intermittent operation.

Maximum continuous speed 2400 rpm